



MATEC srl

Azienda leader nella codifica industriale dal 1980

ETICHETTE
SCADA
TAG
DATAMATRIX
MES
BARCODE
LASER
MICROPERCUSSIONE
IDENTIFICAZIONE
SINOTTICI
ID
MARCATURA
TELECAMERE
RINTRACCIABILITA' RF-ID
VISIONE





Company Profile



MATEC s.r.l., a leading company in the field of marking and industrial coding, was founded in 1995, but its history originated in 1980 as MATEC di Bosco, then evolved into MATEC Systems in 1986. The company's core business thus passes from the marketing of identification products (labels and tags) to the engineering of automatic coding systems (labelers and industrial markers). With the new millennium the first integrated hw/sw solutions of recognition systems using laser readers, scanners and cameras are born. Since 2005, with the acquisition of new professional figures, MATEC is able to provide complex IT solutions aimed at Process and Product Control, and consequent Traceability.



Values and Skills

MATEC's MISSION is to research, study and test new technologies and identification techniques so as to be proactive to customers and innovative in the Italian market.

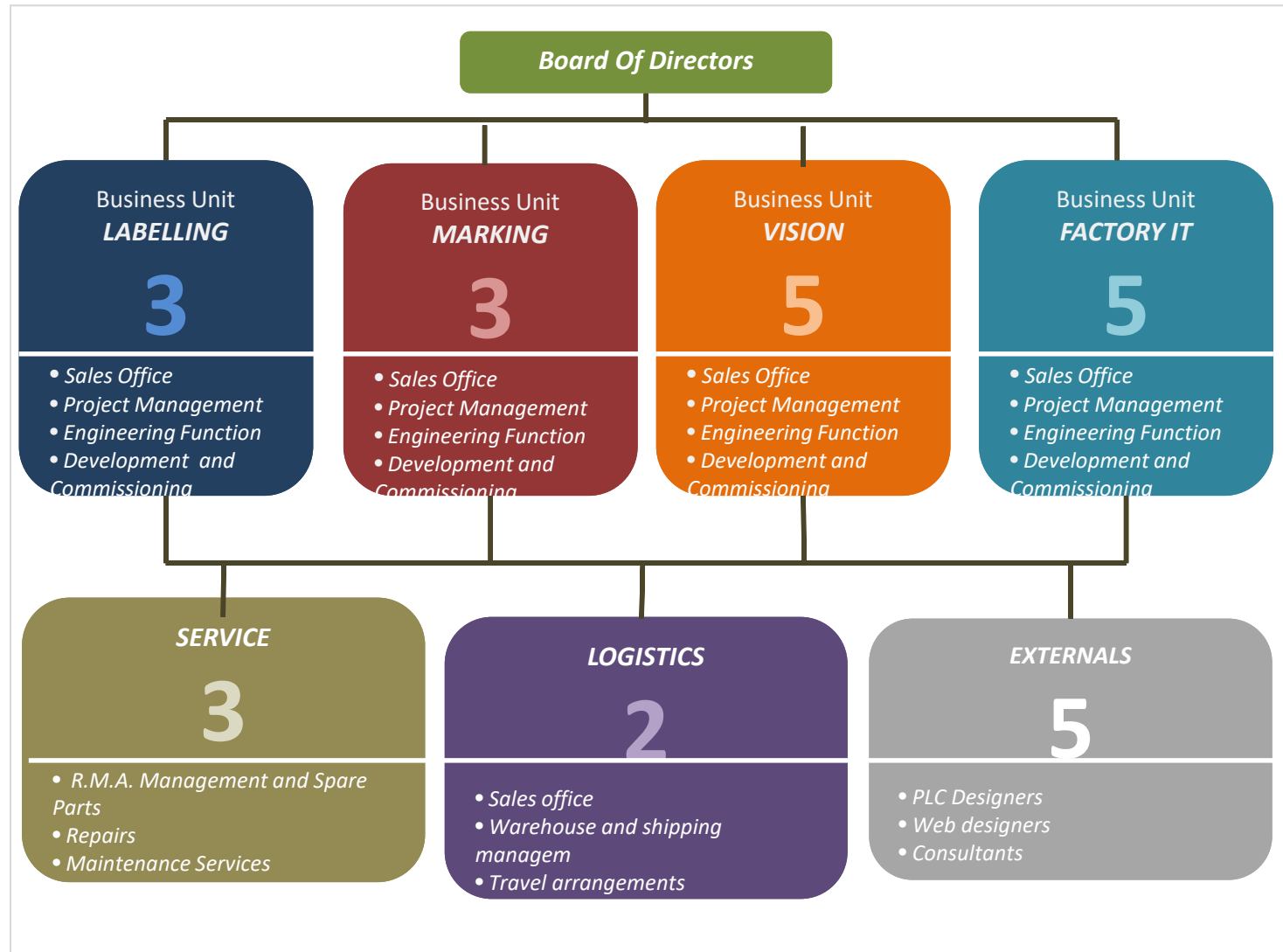
The experience accumulated over the years is transformed into a consulting service for the customer: with the understanding of his ideas and requests, with a deep knowledge of the technical contents of the various procedures, with the evaluation of their applicability, thus determining the optimal solution.

ISO 9001 certified company, it proposes itself to customers to design, produce, install and assist over time equipment and systems with the "turnkey" formula.

The Company operates with four business units, "Labelling", "Marking", "Artificial Vision" and "Factory IT solutions", in the design, implementation, and management of systems and services for industry.

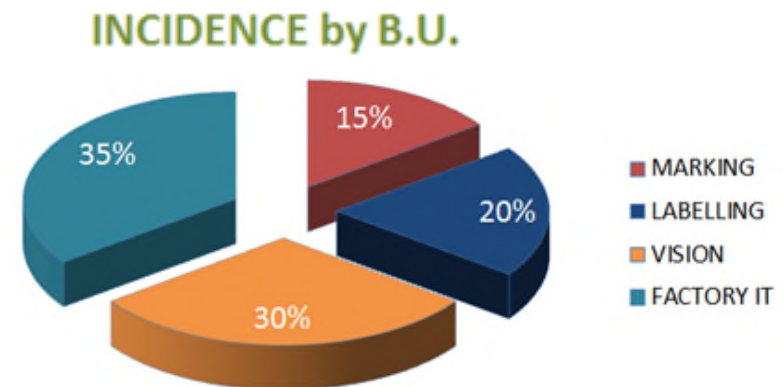
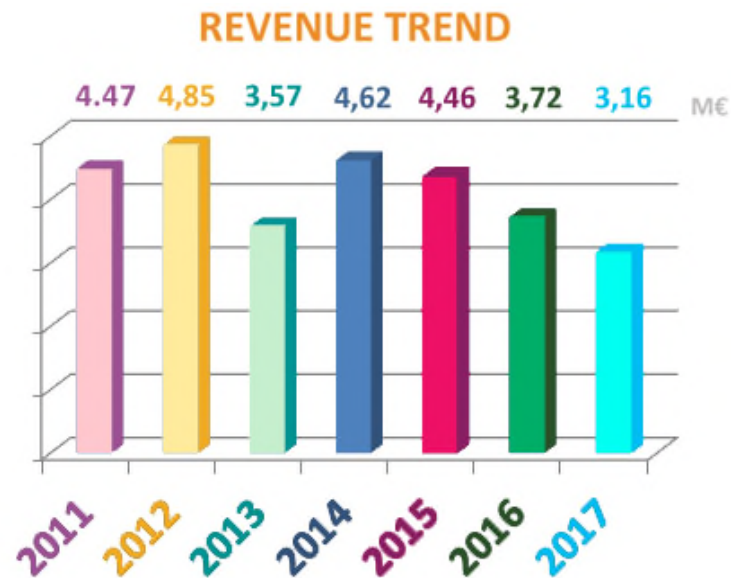


Business organization





Business Charts

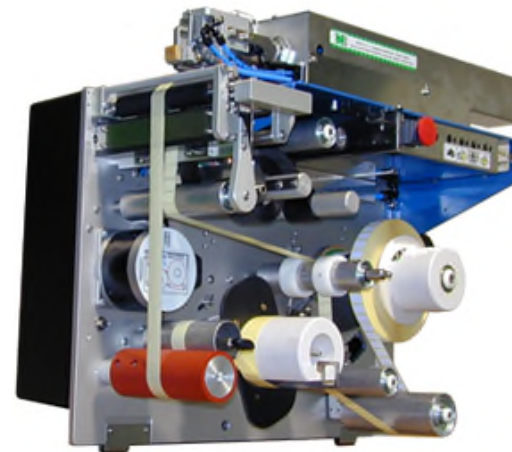




IDENTIFICATION

In MATEC we design, produce or engineer industrial solutions of machines of the most famous manufacturers worldwide, which can be installed both in stand-alone workstations and on board the production lines:

In our catalog you will find a wide range of automatic labelers, micro-percussion markers and laser engraving systems capable of marking any type of code on any surface.





RECOGNITION

We are Global Partners and VARs of the most established brands of Cameras and Thermal Imaging Cameras capable of detecting shapes and temperatures, and of manual and fixed 2D / 3D and RFID code readers, able to decode DPM (Direct Part Marking), in addition to RFID (Radio-Frequency IDentification) solutions.





PRODUCTION CONTROL

Over the years we have developed countless software applications in the industrial field, from DCS (Distributed Control System) for the control and command of automation systems, to SCADA (Supervisory Control And Data Acquisition) for supervision and acquisition of plant data, up to the most recent implementations MES (Manufacturing Execution System), for JIS (Just In Sequence) management and traceability (Product Traceability).

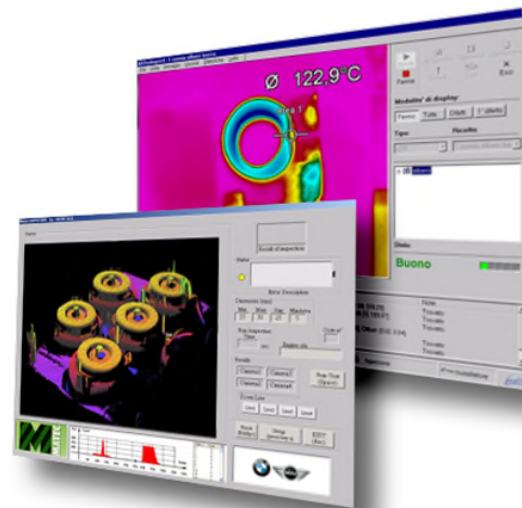




INDUSTRIAL VISION

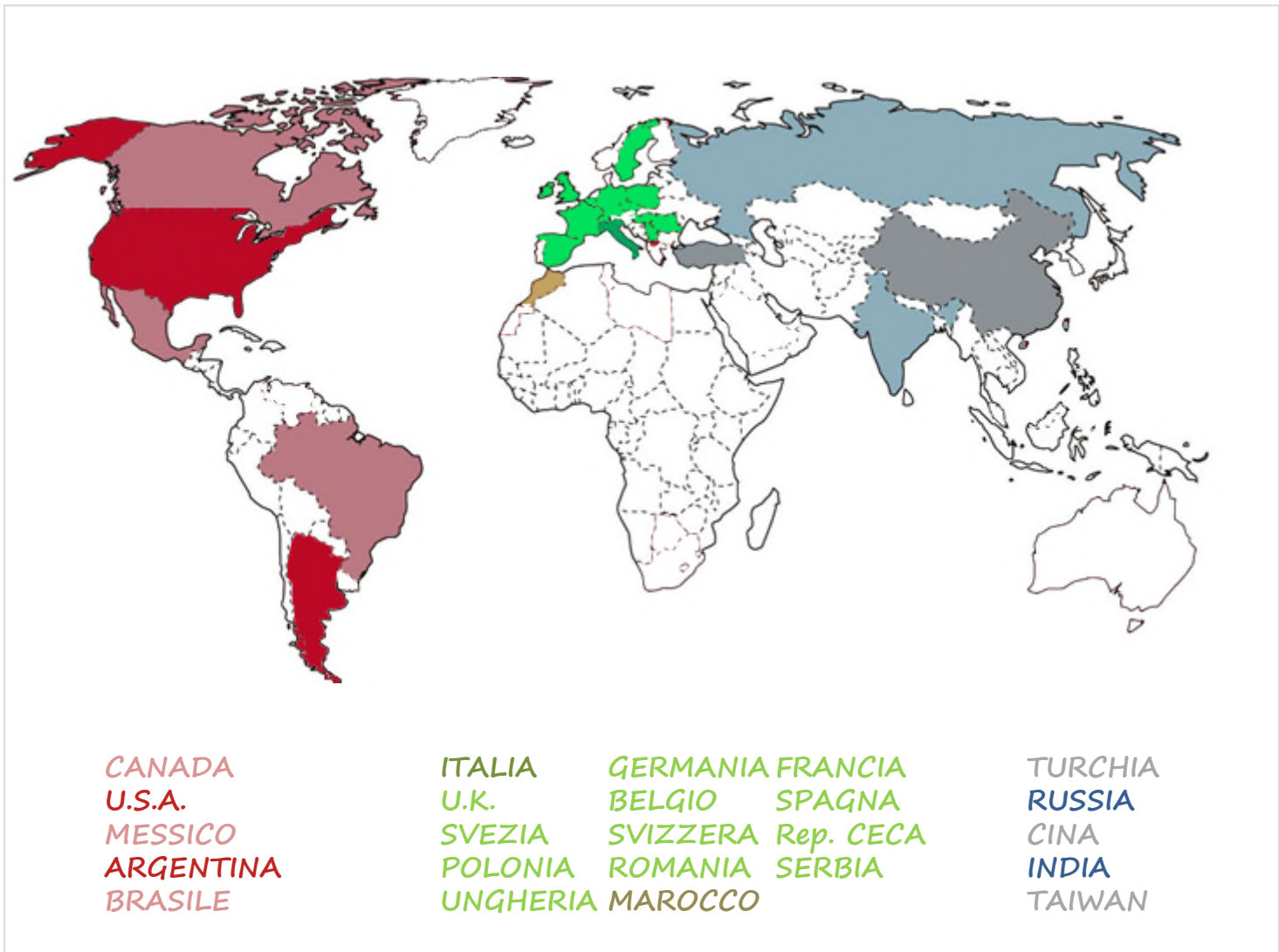
We are specialized in applications where a combination of hardware and software provides operational guidance to devices in performing their functions, capturing and processing images.

It is not just a matter of acquiring images from the cameras, but of analyzing them to determine shapes, codes and characteristics, such as position or temperature: all this is made possible by the use of the latest and most modern Computer Artificial Vision technologies.





MATEC installed worldwide





References





References





References

